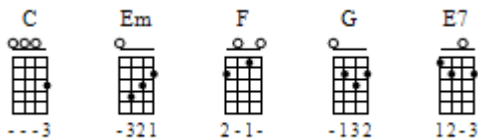


Screw You

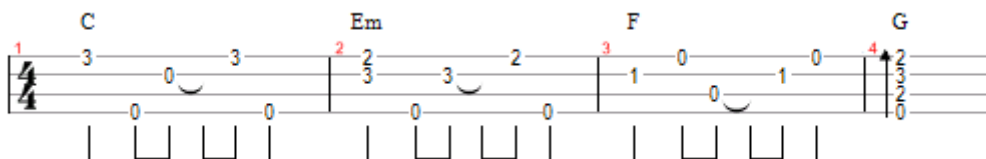


Stephanie and Ted (Kate Micucci)

① = A ③ = C
② = E ④ = G



INTRO



VERSE 1

C Em F G
I've got so many questions in my mind
C Em F G
I've got so many answers to find
C Em F G
Can you be the man I've imagined?
C Em F G
Am I magical enough for this to happen?

BRIDGE

C
Coz I like you (I like you)
Em F G
I like you (I like you)

CHORUS

F G
And like can lead to like-like
E7 F
And like-like can lead to love
C Em F G
Sure as the stars above I'd really like to screw you

VERSE 2

C Em F G
Can I be the man you're looking for?
C Em F G
Can I be your girl forever more?
C Em F G
I'll try real hard not to lose her
C Em F G
And I'll try to be less of a loser

BRIDGE

 C
Because I like you (I like you)
 Em F G
I like you (I like you)

CHORUS

 F G
And like can lead to like-like
 E7 F
And like-like can lead to love
 C Em F G
Sure as the stars above I'd really like to screw you, kiss you, screw you, kiss you
C
Screw you