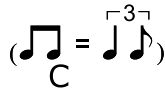


Moderate ♩ = 120



*m p i p i p i p i* *m p i p i p i p i*

1

Ukulele tablature for measures 1-4. The key signature has one flat (F major). The first two measures are in C major (no sharps or flats). The last two measures are in F major (one flat). The tablature shows fingerings (0-3) and a 4/4 time signature.

*m p i p i p i p i* *m p i p i p i p i*

3

Ukulele tablature for measures 5-8. This system continues the C major and F major patterns from the previous system.

F *m p i p i p i p i* *m p i p i p i p i*

5

Ukulele tablature for measures 9-12. This system continues the C major and F major patterns.

C *m p i p i p i p i* *m p i p i p i p i*

7

Ukulele tablature for measures 13-16. This system continues the C major and F major patterns.

G7 *m i p* F7

9

Ukulele tablature for measures 17-20. This system continues the C major and F major patterns.

*p m i p m i* C G7

11

Ukulele tablature for measures 21-24. This system continues the C major and F major patterns, ending with a final chord in G7.