

Born to Run



Bruce Springsteen

C **F** **G⁷(sus4)** **G⁷** **Am** **Dm** **B^b** **Gm⁷** **B^b(sus4)**

E^b(sus4) **E^b** **F(sus4)** **F** **A^b(sus4)** **A^b** **C[#](sus4)** **C[#]** **D(sus4)** **D**

Capo 4th fret

INTRO

C C F Gsus4 G
 C C F Gsus4 G

Capo fret 4

VERSE 1

C F G7
 In the day we sweat it out in the streets of a runaway American dream
 C F G7
 At night we ride through mansions of glory in suicide machines
 F Am
 Sprung from cages out on Highway 9
 Dm Am C
 Chrome wheeled, fuel injected and steppin' out over the line
 B^b F Am
 Ohhh, maybe this town rips the bones from your back
 Dm Am
 It's a death trap, it's a suicide rap
 C Am
 We gotta get out while we're young
 F G7 C
 Cause tramps like us, baby we were born to run

INTRO

VERSE 2

C F G7
Wendy let me in I wanna be your friend I want to guard your dreams and visions
C F G7
Just wrap your legs 'round these velvet rims and strap your hands across my engines
F Am
Together we could break this trap
Dm Am C
We'll run till we drop, baby, we'll never go back
Bb F Am
Ohhhh, will you walk with me out on the wire
Dm Am
Cause, baby, I'm just a scared and lonely rider
C Am
But I gotta find out how it feels
F G7 C
I want to know if love is wild, babe, I want to know if love is real

INTRO

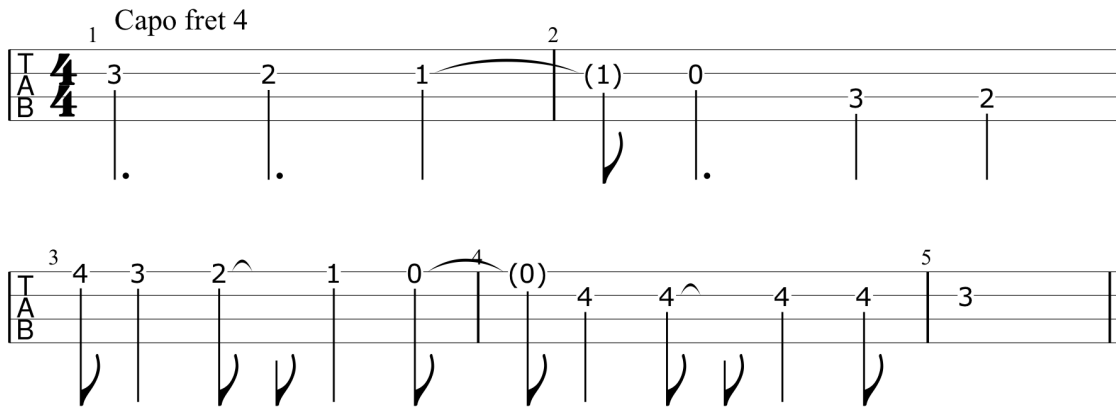
SOLO

C F G7
C F G7
Am G7 C Gm7

MIDDLE

Bbsus4 Bb Bbsus4 Bb
Beyond the palace hemi-powered drones
Ebsus4 Eb Ebsus4 Eb
Scream down the boulevard
Fsus4 F Fsus4 F
The girls comb their hair in rearview mirrors
Absus4 Ab Absus4 Ab
And the boys try to look so hard
Bbsus4 Bb Bbsus4 Bb
The amusement park rises bold and stark as
Ebsus4 Eb Ebsus4 Eb
Kids are huddled on the beach in a mist
Fsus4 F Fsus4 F
I wanna die with you, Wendy, on the streets tonight
Absus4 Ab Absus4 Ab
In an ever - lasting kiss

C#sus4 C# C#sus4 C# C#sus4 C#
Absus4 Ab Absus4 Ab
C#sus4 C# C#sus4 C#
Dsus4 D Dsus4 D



VERSE 3

C F G7sus4 G7
 The highway's jammed with broken heroes on a last chance power drive
 C F G7sus4 G7
 Everybody's out on the run tonight but there's no place left to hide
 F Am
 Together, Wendy, we can live with the sadness
 Dm Am C
 I'll love you with all the madness in my soul
 Bb F Am
 Ohhh, someday girl I don't know when
 Dm Am
 We're gonna get to that place where we really want to
 C Am
 Go and we'll walk in the sun
 F G7 C Am
 But till then tramps like us baby we were born to run
 F G7 C Am
 Ah, honey, tramps like us baby we were born to run
 F G7 C
 Come on Wendy, tramps like us, baby, we were born to run

INTRO x2

SAX SOLO

The image displays five lines of ukulele tablature for a saxophone solo. Each line begins with a vertical box containing 'T' and 'A' on the top line and 'B' on the bottom line. The first line includes a 4/4 time signature. The tablature consists of fret numbers (0-7) and articulation marks such as accents (7), slurs (H, P), and breath marks (7, 11). The notes are represented by vertical stems with horizontal bars at the fret level. The piece concludes with a double bar line at the end of the fifth line.